

مجموعة العسكر للتجارة والمقاولات ذ.م.م  
AL-ASKAR TRADING & CONT. GROUP W.L.L



**KANGLIM**



# AL-ASKAR KANGLIM

The emphasis on new technology that is on the continued expansion of the fields of the equipment relating to the environment, transportation, security, and construction lead **AL-ASKAR** to offer more contribution as well as to become a highly innovative global enterprise.

**AL-ASKAR** is in Partnership with **KANGLIM** initiates the development of various kinds of machines related to hydraulic technology for the better tomorrow.

**KANGLIM** has produced cranes and special purpose vehicles for domestic and overseas markets using state-of-the-art hydraulic technology.

**KANGLIM** has continuously development of complete products with high quality such as truck-mounted cranes, special-purpose vehicles for electric works, fire trucks, rescue trucks, garbage compactors and major line of environmental vehicles equipment.

As the market demand rises continuously, **AL-ASKAR** and **KANGLIM** find each other to fulfill one common goal which is to make their Customer Satisfied and give them the BEST Quality of Service they deserve. **AL-ASKAR** and **KANGLIM** got into an Exclusive Partnership where **AL-ASKAR** is the sole and only authorized dealer of **KANGLIM** products in the Kingdom of Saudi Arabia & GCC.



## Management Philosophy

Supplying machineries and equipments for safe working environments and clean living circumstance.

## Kanglim which aims the leading world class manufacturer

Kanglim will show you variety appearance with limitless passion and knowhow to make company culture of customer aim

### 2000 'History

- 2006.09 Acquired the Inno-Biz (Innovative Business Company) from Korean government
- 2006.07 GO mark for Hydro-Static Transmission type Road Sweeper Certified
- 2005.12 Voted as top of defence Industry
- 2002.06 Ministry of National Defence "Quality Management System 0050-9001" certified
- 2001.12 GO mark for Road Sweeper certified

### 1990 'History

- 1997.12 3 Companies were integrated by Kanglim Co., Ltd.
- 1997.11 EM mark certified
- 1997.10 ISO 9001 certified
- 1997.06 Beijing-Hualin Special Vehicle Co., Ltd. Incorporated in China
- 1993.04 President Y.S. Kim visited Kanglim factory
- 1992.12 Presidential Citation awarded for model company on national flowers
- 1992.06 The Royal Swedish Order of the "the North Polar-Star" awarded
- 1991.05 KT mark certified

### 1980 'History

- 1989.03 Technical License with AICHI of Japan
- 1988.09 Chongwon Factory Completed
- 1988.04 Presidential Citation awarded for New Technology
- 1988.01 Qualified as a Defence Industry
- 1986.10 Kanglim Precision Co., Ltd. Incorporated
- 1986.09 Industrial Medal of Honer awarded
- 1986.08 Kanglim R&D Center establishment
- 1985.10 Technical collaboration agreement made with HIAB-FOCO of Sweden
- 1982.07 Kanglim Machinery Co., Ltd. Incorporated & Manufacturing of Hydraulic Crane

### 1970 'History

- 1979.06 Kanglim Inc. Co., Ltd. incorporated





## SPECIAL FEATURES:

Perfect safety in operation, excellent lifting capacity, long durability, and convenient control with various safety devices.

## STRONGER AND LIGHTER BOOM:

Its boom is made of high-tensile steel and a section of boom is structure of bended one-piece steel for lighter boom weight and powerful lifting capacity.

Special valves enable smooth boom extension and retraction for smoother operation to reduce a shock when telescoping the boom.

## RESPONDING TO OPERATOR'S COMMAND:

Equipped with an optimally matched, high-performance control valve, the operating levers provide improved responsiveness and fine-tuned control.

Operation is fast or slow in accordance with operator's command. The Stainless rod between left and right operation levers are provided as standard.

## SAFETY:

**KANGLIM** equipped with automatic anti-tube lock that enables the full operation shut-off to prevent accident and damage to the equipment.

## OPERATOR CABIN:

The Cabin/Control area for the operator in **KANGLIM** crane is designed to have a great view of the whole surrounding area while lifting and moving during the work, and more convenient for easiest & safest operation.

## FULL CIRCLE, CONTINUOUS SLEWING:

The newly designed compact slewing post improves performance providing full circle, continuous rotation for more efficient operations.

## GREATER WINCH:

The advantages from the enlarged winch drum and plunger motor are evident during start-up when maximum power is required, and re-hoisting with a load on the hook can be handled with ease from the pitch of the drum grooves to the fitting of the guide sheave, cable winding has been improved in every detail so as to prevent the cable from winding off position.

## WARRANTY:

**KANGLIM** products are 2 years warrantied for all main parts.

## AFTER SALES SERVICES:

After sales services are available in **AL-ASKAR** central workshop by the qualified and professional technicians, we are understanding and we value the importance of time of our customers and always bear in mind the completion in specified time and without delay.

## SPARE PARTS:

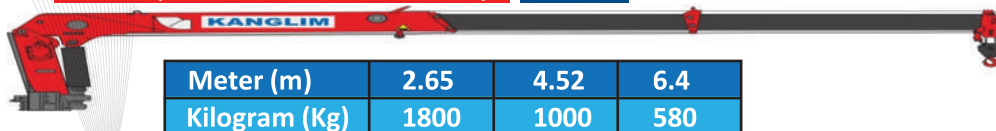
As our commitment to our customers, all spare parts are available in the warehouse and will be arranged immediately and guaranteed on time.





## KS 633(3 SECTION BOOM/3 TONS)

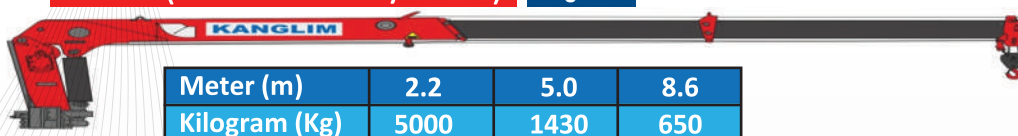
Page 6-7



Meter (m)	2.65	4.52	6.4
Kilogram (Kg)	1800	1000	580

## KS 1153(3 SECTION BOOM/5 TONS)

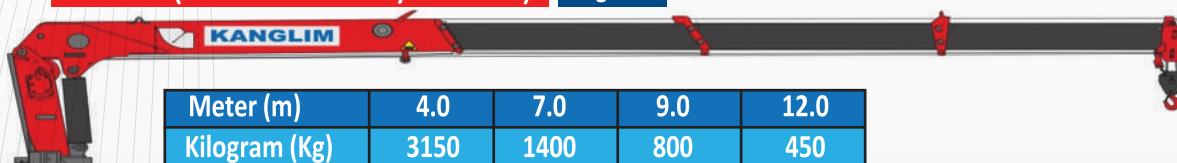
Page 6-7



Meter (m)	2.2	5.0	8.6
Kilogram (Kg)	5000	1430	650

## KS 1254(4 SECTION BOOM/6.3 TONS)

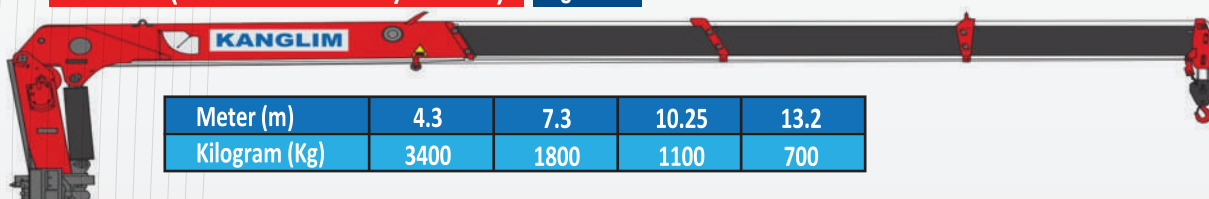
Page 8-9



Meter (m)	4.0	7.0	9.0	12.0
Kilogram (Kg)	3150	1400	800	450

## KS 1884(4 SECTION BOOM/8 TONS)

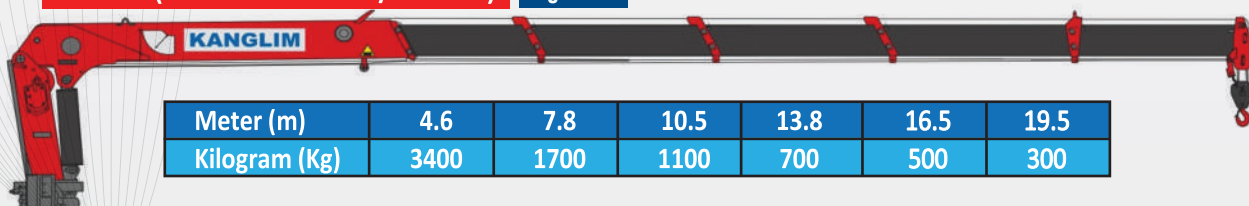
Page 10-11



Meter (m)	4.3	7.3	10.25	13.2
Kilogram (Kg)	3400	1800	1100	700

## KS 1886(6 SECTION BOOM/ 8 TONS)

Page 12-13

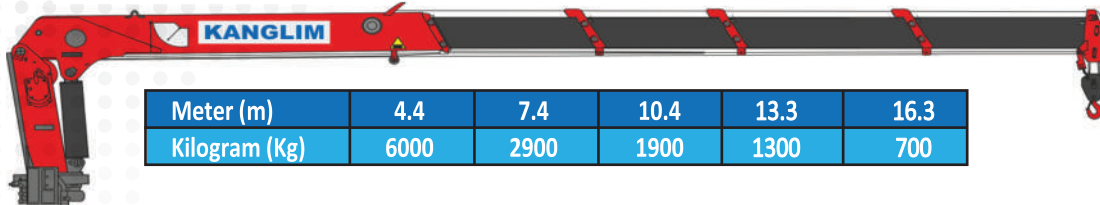


Meter (m)	4.6	7.8	10.5	13.8	16.5	19.5
Kilogram (Kg)	3400	1700	1100	700	500	300



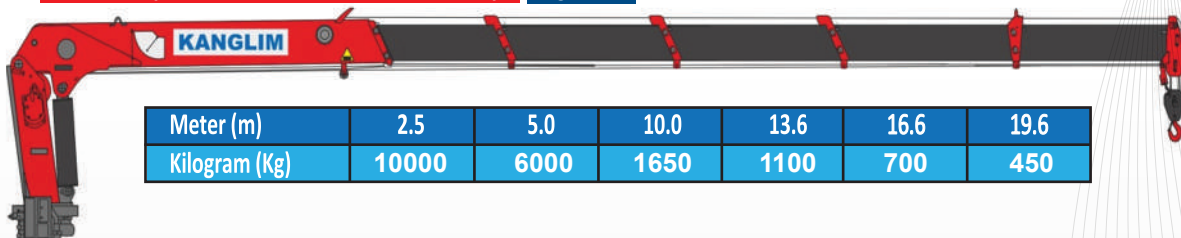


## KS 2305(5 SECTION/10 TONS) Page 14-15



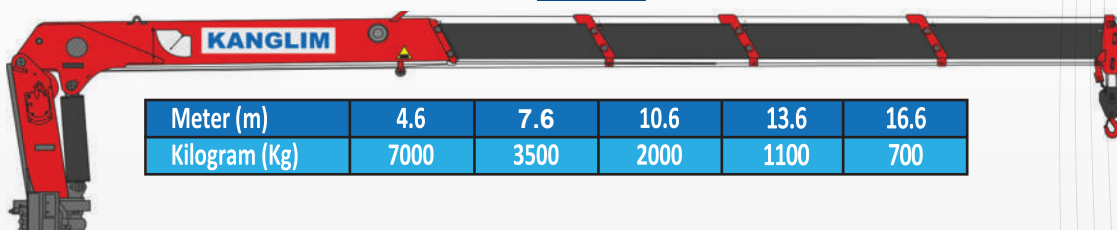
Meter (m)	4.4	7.4	10.4	13.3	16.3
Kilogram (Kg)	6000	2900	1900	1300	700

## KS 2306(6 SECTION BOOM/10 TONS) Page 16-17



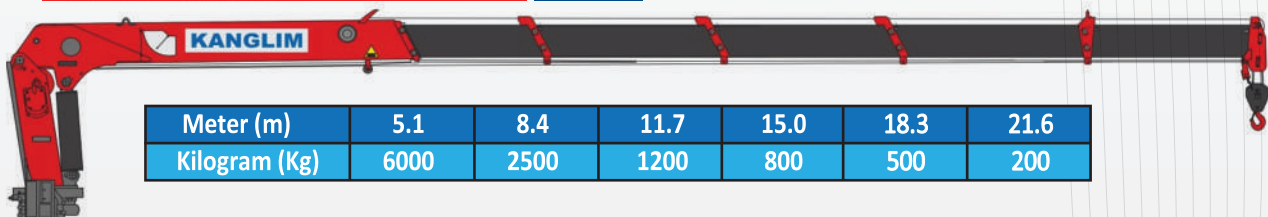
Meter (m)	2.5	5.0	10.0	13.6	16.6	19.6
Kilogram (Kg)	10000	6000	1650	1100	700	450

## KS 2505(5 SECTION BOOM/13 TONS) Page 18-19



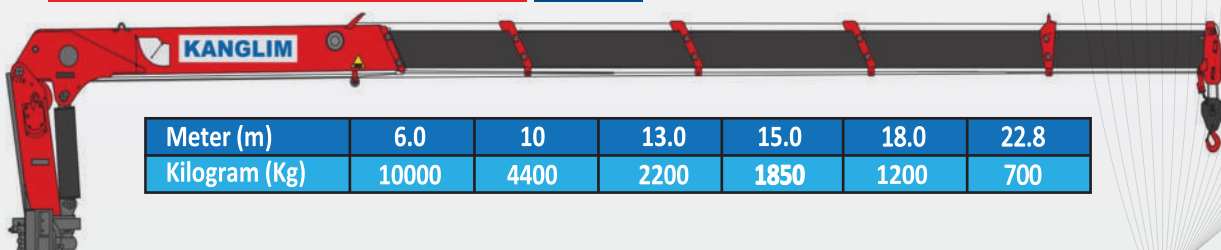
Meter (m)	4.6	7.6	10.6	13.6	16.6
Kilogram (Kg)	7000	3500	2000	1100	700

## KS 3206(6 SECTION BOOM/14 TONS) Page 20-21



Meter (m)	5.1	8.4	11.7	15.0	18.3	21.6
Kilogram (Kg)	6000	2500	1200	800	500	200

## KS 4806(6 SECTION BOOM/16 TONS) Page 22-23

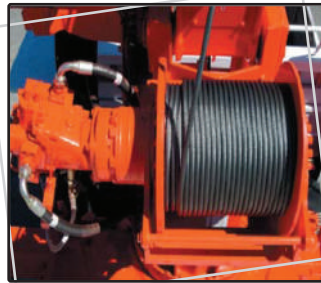


Meter (m)	6.0	10	13.0	15.0	18.0	22.8
Kilogram (Kg)	10000	4400	2200	1850	1200	700



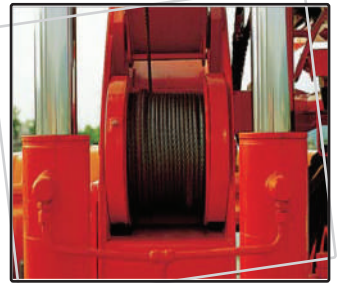
#### Working Lamp

Two working lamps(70w) installed at both sides of boom help the working in night time or indoor.



#### Tow Speed Auxiliary Winch

tow speed type winch enhance the working efficiency and the low-noise automatic brake minimize the working noise. Also the antitorsion wire rope lengthen its life cycle. (Applicable to 16 ton crane)



#### Main Winch

For 16 ton cranes(KS4806), tow speed type winch is available as option.



#### Accelerator

Easily control the engine RPM by cable and thereby control the crane working speed. (Applicable to over 16 ton crane)



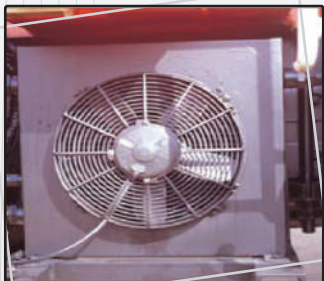
#### Locking Pin

Lock the slewing bearing to prevent from rotating of crane during driving. (Applicable to over 6.6 ton crane)



#### Tow Stage Outrigger

Rectangular type tow stage outrigger provides wide span (7 m) and high stability. (Applicable to over 16 ton crane)



#### Oil Cooler

Equipped to a Crane over 7.1tons, as Standard.



#### Computerized Load Monitor

monitoring system ,gives better control over operation and safety.



#### Anti Two Block System

gives automatic locking facility for the hook block.

**OUTRIGGER SPAN WIDE AND GOOD WORKING STABILITY**



## KN900 - KN1000 KNUCKLE CRANE

	KN900	KN1000
Maximum lifting capacity	3200 Kg/3.2 tons	5000 Kg/ 5 tons
Rated Lifting Capacity	63 KN. m	98 KN. m
Lifting Capacity	3200kg / 2.3 m	5000kg / 2 m
	1780 kg / 4 m	2050 kg / 4 m
	1250 kg / 5.7 m	1400 kg / 5.7 m
	700 kg / 7.56 m	1000 kg / 7.4 m
Max. Working Radius	7.5 m	7.4 m
Max. Lifting Height	10.3 m	10.5 m
Oil tank capacity	80 L	80 L
Rated Pressure	180 kg/cm <sup>2</sup>	180 kg/cm <sup>2</sup>
Boom Type / Section	Pucker Hexagonal/ 4 stages	Pucker Hexagonal / 6 Stages
Swing peed	4.5 rotation/min	4.5 rotation/min
Elevating angle speed	30°/30 sec	30°/30 sec
Boom Extending Speed	8m / 6 sec	8m / 6 sec
Swing Angel	410° Continuous	410° Continuous
Long of basic boom	2.52m	4.37m
Long of all boom	7.8m	7.7m
Out rigger span(Horizontal)	4.3 m	5 m
Crane weight	1750kg	2150kg
Maximum boom angle	78.5°	78.5°
Chassis payload	Over 5 tons	Over 5tons
Maximum lifting capacity	3200 Kg/3.2 tons	5000 Kg/ 5 tons

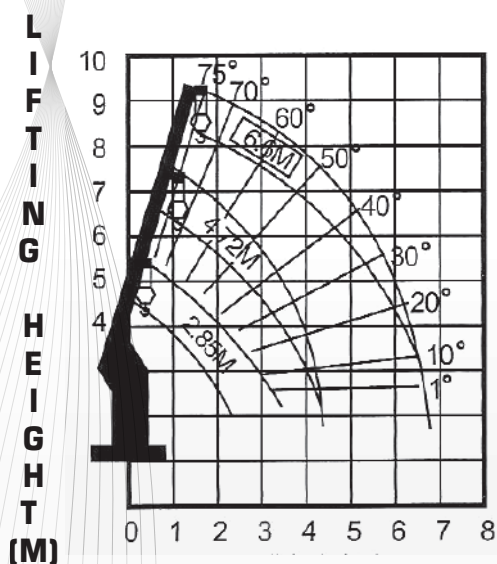


LASER MACHINE CUTTING,GOOD APPEARANCE



## LIFTING PERFORMANCE TABLE

### WORKING RANGE & LIFTING HEIGHT (M)



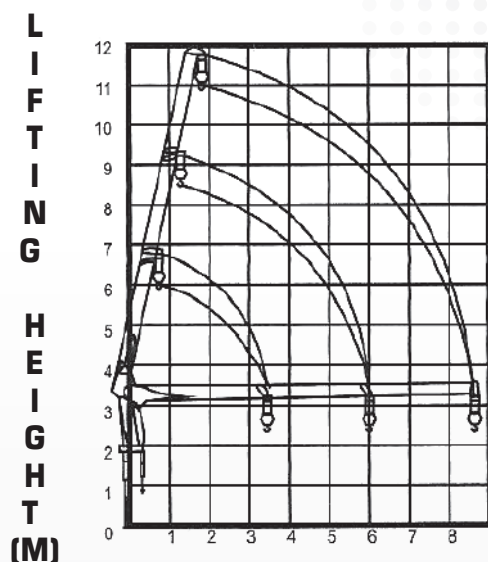
WORKING RANGE (M)

# KS633



## LIFTING PERFORMANCE TABLE

### WORKING RANGE & LIFTING HEIGHT (M)



WORKING RANGE (M)

# KS1153



HEXAGONAL BOOM TELESCOPIC FIRMER AND STRONGER



## KS633 - KS1153 STICK-BOOM CRANE

	KS633	KS1153
Maximum lifting capacity	3000 kg / 3 tons	5000 kg / 5 tons
Rated lifting capacity	63KN.M	108KN.M
Lifting Capacity	3000 kg / 2 m	5000 kg / 2.2 m
	1800 kg / 2.5 m	2900 kg / 3.5 m
	780 kg / 5 m	1430 kg / 5 m
	580 kg / 6.4 m	650 kg / 8.6 m
Max. Working Radius	6.4 m	8.6 m
Max. Lifting Height	8 m	11 m
Oil tank capacity	45 L	80 L
Rated Pressure	180 kg/cm <sup>2</sup>	180 kg/cm <sup>2</sup>
Boom Type / Section	Hexagonal / 3 Stages	Hexagonal / 3 Stages
Swing speed	0-2 rotation/min	0-3 rotation/min
Hook hoisting speed	17 m / min	25 m / min
Elevating angle speed	1-75°/17 sec	1-76°/17 sec
Boom Extending Speed	3.75 m / 10 sec	5.16m / 12 sec
Swing Angel	360° Continuous	360° Continuous
Winch type	Gear winch broke	
Swing type	Gear winch automatic	
Long of basic boom	2.85 m	3.69 m
Long of all boom	6.6 m	8.85 m
Out rigger span(Horizontal)	3.6m	3.75m
Crane weight	1100 kg	1800 kg
Maximum boom angle	75°	76°
Chassis payload	Over 4.5 tons	Over 5 tons

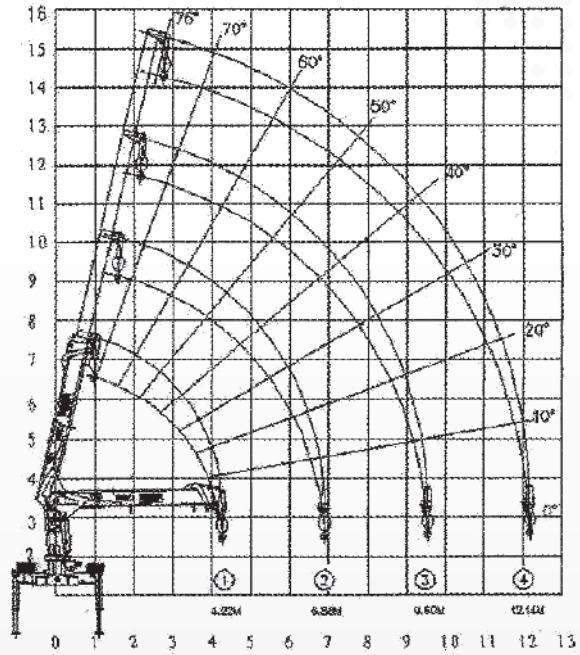
Radius in Meters (M)	Main Boom Length in Meters		
	2.85	4.72	6.6
2.0	3200		
2.2	3000	2200	2000
2.5	2000	1870	1640
3.0	1800 (2.65)	1500	1340
3.5		1270	1140
4.0		1100	990
4.5		1000 (4.52)	880
5.0			780
5.5			730
6.0			630
6.4			580 (6.4)



## LIFTING PERFORMANCE TABLE

### WORKING RANGE & LIFTING HEIGHT (M)

L  
I  
F  
T  
I  
N  
G  
  
H  
E  
I  
G  
H  
T  
  
(M)



WORKING RANGE (M)



**IMPORT MULTI STAGE TELESCOPIC BOOM CYLINDERS  
AND MULTI BOOM STRETCHED OUT IN ORDER**



## KS1254 STICK-BOOM CRANE

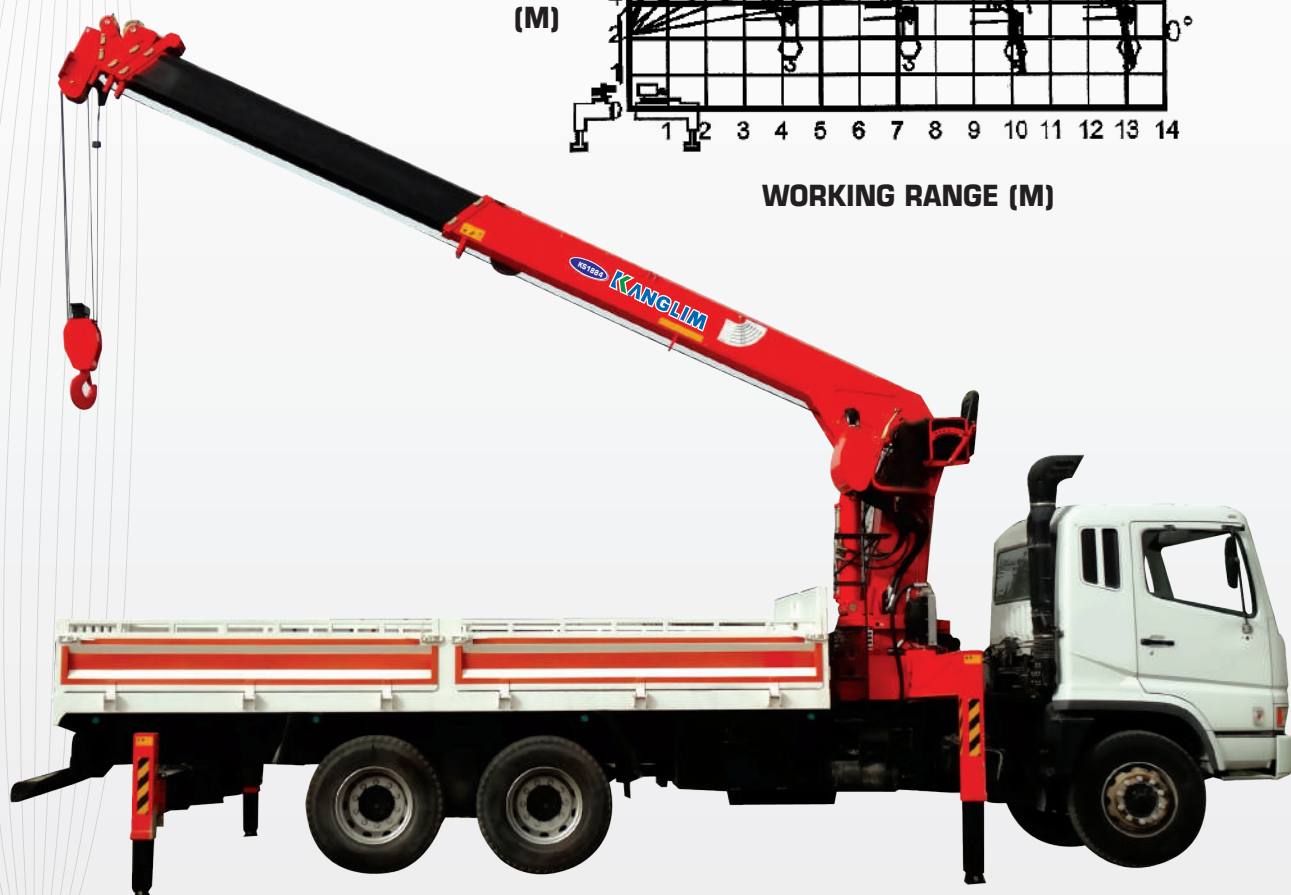
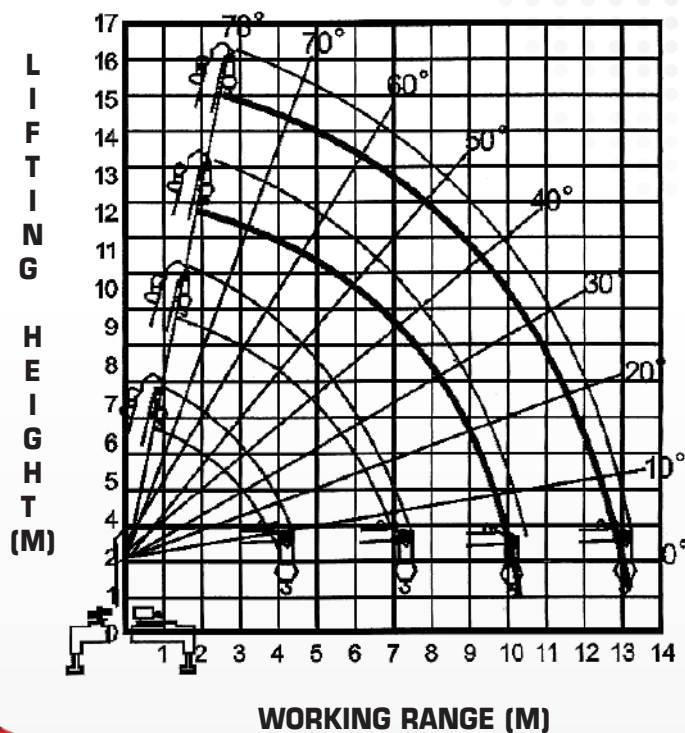
KS1254	
Maximum lifting capacity	6300 kg / 6.3 tons
Rated lifting capacity	138.6 KN. m
Lifting Capacity	6300 kg / 2.2 m
	3150 kg / 4 m
	1600 kg / 6 m
	450 kg / 12 m
Max. Working Radius	12 m
Max. Lifting Height	14.2 m
Oil tank capacity	140 L
Rated Pressure	180 kg/cm <sup>2</sup>
Boom Type / Section	Hexagonal / 4 Stages
Swing speed	0-2.5 rotation/min
Hook hoisting speed	14 m / min
Elevating angle speed	1-75°/17 sec
Boom Extending Speed	12.34m / 16 sec
Swing Angel	360° Continuous
Winch type	Gear winch broke
Swing type	Gear winch automatic
Long of basic boom	3.75 m
Long of all boom	8.5 m
Out rigger span(Horizontal)	5.036 m
Crane weight	Over 7 tons
Maximum boom angle	75°
Chassis payload	6300 kg / 6.3 tons

Radius in Meters (M)	Boom length in meter			
2.2	6300			
2.5	5600	4200	3650	
3	4500	3600	3250	2500
3.5	3750	3100	2900	2400
4	3150	2450	2400	2250
4.5		2050	2000	1850
5		1850	1800	1700
5.5		1750	1600	1500
6		1600	1250	1150
7		1400	1100	950
8			950	750
9			800	650
10				600
11				550
12				450
13				



## LIFTING PERFORMANCE TABLE

WORKING RANGE & LIFTING HEIGHT (M)



MAIN PARTS & HYDRAULIC COMPONENTS MANUFACTURED IN KOREA EUROPE AND USA WITH MORE RELIABILITY



## KS1884 STICK-BOOM CRANE

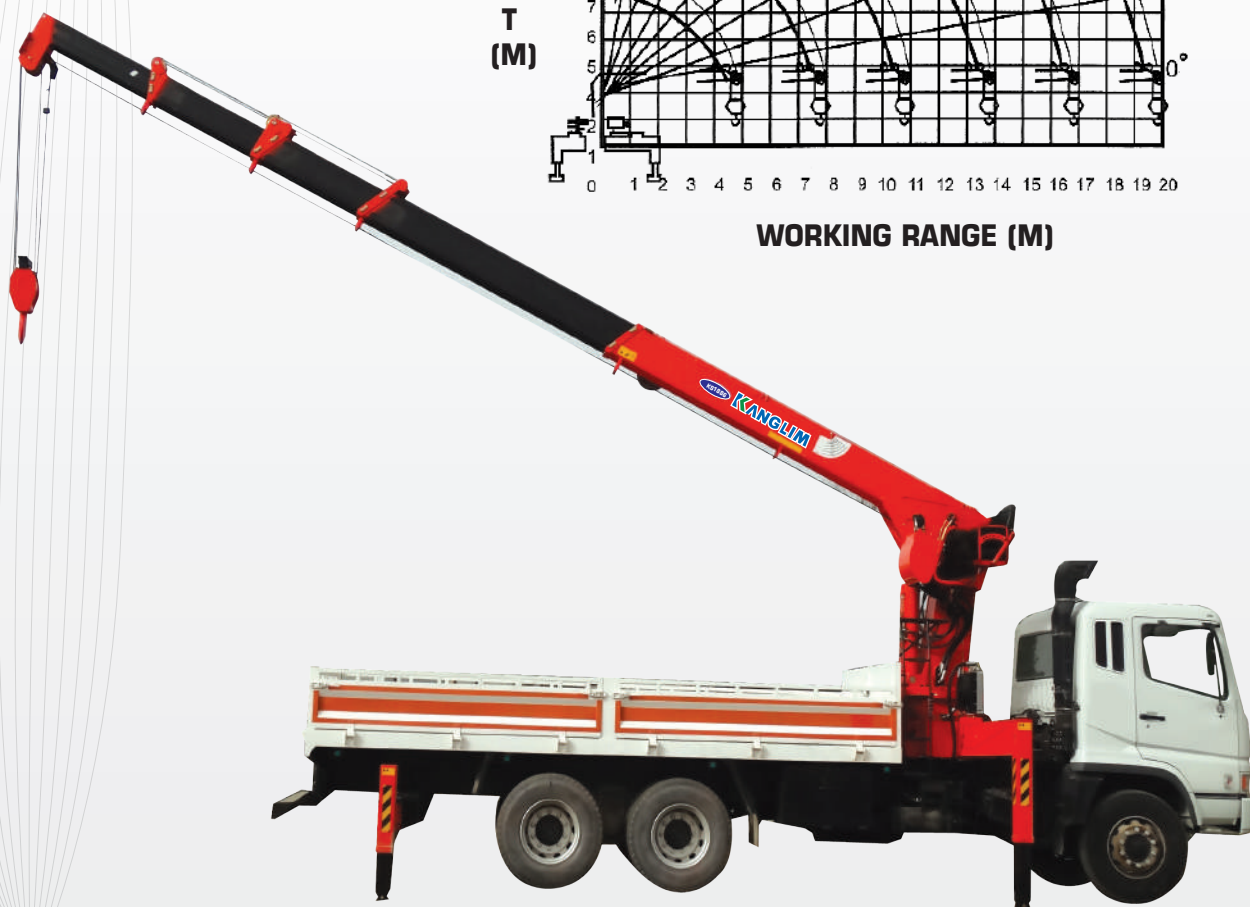
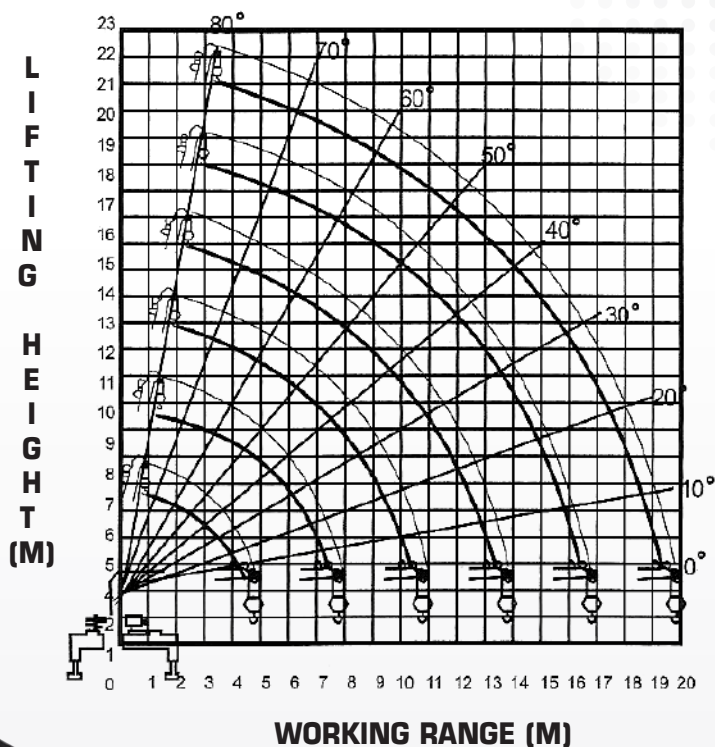
KS1884	
Maximum lifting capacity	8000 kg / 8 tons
Rated lifting capacity	157 KN. m
Lifting Capacity	8000 kg / 2 m
	3900 kg / 4 m
	1625 kg / 8 m
	700 kg / 13.2 m
Max. Working Radius	13.2 m
Max. Lifting Height	15 m
Oil tank capacity	140 L
Rated Pressure	180 kg/cm <sup>2</sup>
Boom Type / Section	Hexagonal / 4 Stages
Swing speed	0-2.5 rotation/min
Hook hoisting speed	14 m / min
Elevating angle speed	1-78°/18 sec
Boom Extending Speed	13.5m / 38 sec
Swing Angel	360° Continuous
Winch type	Gear winch broke
Swing type	Gear winch automatic
Long of basic boom	4.6 m
Long of all boom	13.5 m
Out rigger span(Horizontal)	5.56 m/4.5 m
Crane weight	4380kg
Maximum boom angle	78°
Chassis payload	Over 8 tons

Radius in Meters (M)	BOOM LENGTH IN METER			
2	8000	6500		
2.5	7000	5500	5200	
3	5400	4600	4300	
3.5	4500	4000	3850	3400
4	3900	3500	3400	3100
4.5	3400(4.3)	3100	3100	2900
5		2850	2750	2600
5.5		2600	2550	2400
6		2300	2350	2200
7		2000	2000	1850
8		1800(7.3)	1750	1625
9			1550	1450
10			1100(10.25)	1300
11				1200
12				1000
13				700(13.2)



## LIFTING PERFORMANCE TABLE

WORKING RANGE & LIFTING HEIGHT (M)



BOOM WITH 3,4,5 & 6 SECTION PROVIDES VARIETY OPTIONS FOR USERS

## KS1886 STICK-BOOM CRANE

KS1886	
Maximum lifting capacity	8000 kg / 8 tons
Rated lifting capacity	157 KN. m
Lifting Capacity	8000 kg / 2 m
	3900 kg / 4 m
	1000 kg / 12 m
	300 kg / 19.5 m
Max. Working Radius	19.5 m
Max. Lifting Height	22.5 m
Oil tank capacity	140 L
Rated Pressure	180 kg/cm <sup>2</sup>
Boom Type / Section	Hexagonal / 6 Stages
Swing peed	0-2.5 rotation/min
Hook hoisting speed	14 m / min
Elevating angle speed	1-80°/18 sec
Boom Extending Speed	14.38m / 38 sec
Swing Angel	360° Continuous
Winch type	Gear winch broke
Swing type	Gear winch automatic
Long of basic boom	4.84 m
Long of all boom	19.74m
Out rigger span(Horizontal)	5.56 m/4.5 m
Crane weight	4510kg
Maximum boom angle	78°
Chassis payload	Over 8 tons

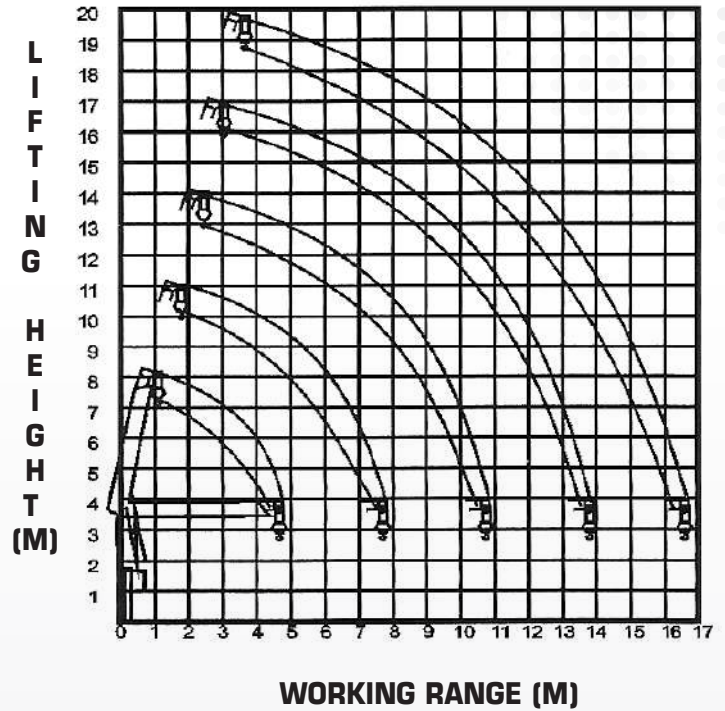
Radius in Meters	BOOM LENGTH IN METER					
	4.6	7.6	10.6	13.6	16.5	19.5
2	8000	6500	5500			
2.5	7000	5500	5200			
3	5400	4600	4300			
3.5	4500	4000	3850			
4	3900	3500	3400			
4.5	3400(4.6)	3100	3100	2900	2900	
5		2850	2750	2600	2600	
5.5		2600	2550	2400	2350	2300
6		2300	2300	2200	2150	2100
7		2000	2000	1850	1800	1750
8		1700(7.8)	1650	1625	1600	1550
9			1550	1450	1400	1350
10			1100(10.5)	1300	1250	1200
11				1200	1150	1100
12				1000	950	1000
13				700(13.8)	900	850
14					750	700
15					650	600
16					500(16.5)	550
17						500
18						450
19						300(19.5)





## LIFTING PERFORMANCE TABLE

WORKING RANGE & LIFTING HEIGHT (M)



THE OIL CONNECTOR FOR CLAMP AND FOLDER WILL NEVER SPILL

## KS2305 STICK-BOOM CRANE

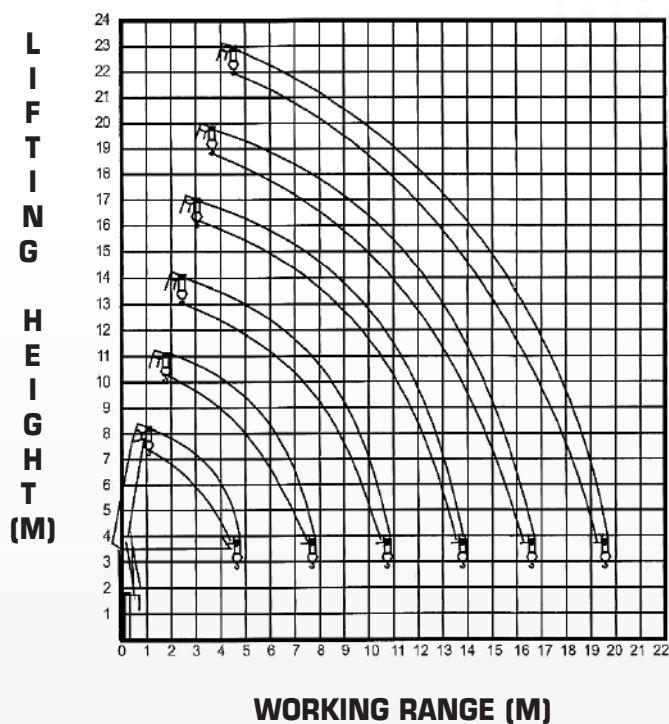
KS2305	
Maximum lifting capacity	10000 kg / 10 tons
Rated lifting capacity	245 KN. m
Lifting Capacity	10000 kg / 2.5 m
	6000 kg / 5 m
	2200 kg / 10 m
	700 kg / 16 m
Max. Working Radius	16.3 m
Max. Lifting Height	18.2 m
Oil tank capacity	200 L
Rated Pressure	180 kg/cm <sup>2</sup>
Boom Type / Section	Hexagonal / 5 Stages
Swing speed	0-2.8 rotation/min
Hook hoisting speed	10 m / min
Elevating angle speed	1-78°/13 sec
Boom Extending Speed	11.9m / 20 sec
Swing Angel	360° Continuous
Winch type	Motor winch
Swing type	Motor winch
Long of basic boom	4.4 m
Long of all boom	16.3m
Out rigger span(Horizontal)	5.65 m/4.45 m
Crane weight	5200kg
Maximum boom angle	78°
Chassis payload	Over 4.5 tons

Radius in Meters (M)	Main Boom Length in Meters				
		2.85	4.72	6.6	
2.5	10000				
3	9300	8500			
3.5	8500	7500	6000	5500	
4	7000	6800	5700	5200	4500
5	6000(4.4)	5700	5400	4600	4000
6		4800	4500	4100	3500
7		3800	3400	3300	2900
8		2900(7.4)	2600	2500	2200
9			2400	2200	2000
10			2100	2000	1700
11			1900(10.4)	1700	1500
12				1400	1300
13				1300(13.3)	1100
14					900
16					700(16.3)



## LIFTING PERFORMANCE TABLE

WORKING RANGE & LIFTING HEIGHT (M)



TOP OPERATION AND BETTER VISION



## KS2306 STICK-BOOM CRANE

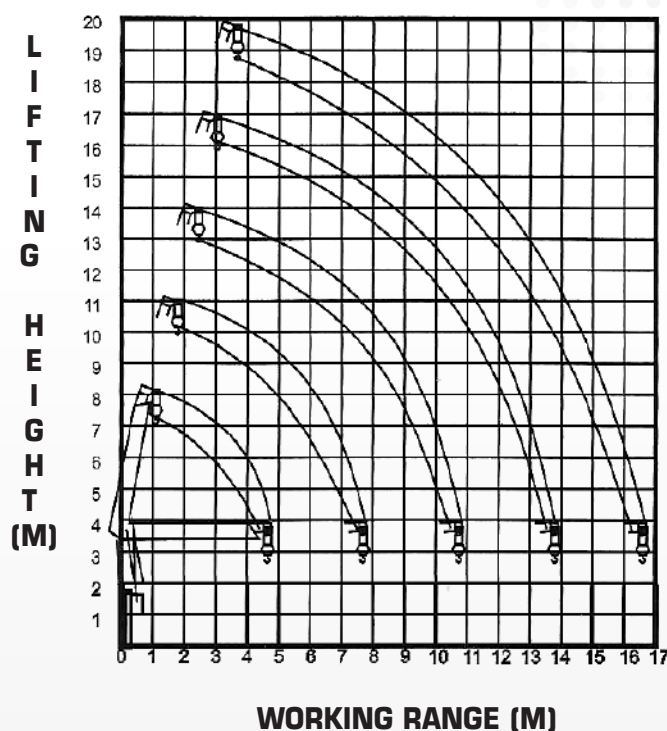
KS2306	
Maximum lifting capacity	10000 kg / 10 tons
Rated lifting capacity	245 KN. m
Lifting Capacity	10000 kg / 2.5 m
	6000 kg / 5 m
	1650 kg / 10 m
	450 kg / 19.6 m
Max. Working Radius	19.6 m
Max. Lifting Height	22.5 m
Oil tank capacity	200 L
Rated Pressure	180 kg/cm <sup>2</sup>
Boom Type / Section	Hexagonal / 6 Stages
Swing peed	0-2.8 rotation/min
Hook hoisting speed	10 m / min
Elevating angle speed	0-78°/13 sec
Boom Extending Speed	15m / 30 sec
Swing Angel	360° Continuous
Winch type	Motor winch
Swing type	Motor winch
Long of basic boom	5 m
Long of all boom	19.9 m
Out rigger span(Horizontal)	5.65 m/4.45 m
Crane weight	5400kg
Maximum boom angle	78°
Chassis payload	Over 4.5 tons

Radius in Meters (M)	Main Boom Length in Meters					
2.5	10000					
3	9300	8500				
3.5	8500	7500	6900			
4	7000	6800	6100	5000		
5	6000	5700	5400	4400	3500	
6		4800	4500	3700	3200	2800
7		3800	3400	3100	2900	2500
8		2900	2700	2400	2300	2200
9			1850	1800	1700	1600
10			1650	1600	1500	1400
11			1500	1400	1300	1200
12				1200	1100	1000
14				1100(13.6)	900	850
16					800	750
18					700(16.6)	650
						450(19.6)



## LIFTING PERFORMANCE TABLE

WORKING RANGE & LIFTING HEIGHT (M)



**OUTRIGGER MULTI CONTROL VALVE, BE ADJUSTED INDIVIDUALLY AND CONVENIENT**

## KS2505 STICK-BOOM CRANE

KS2505	
Maximum lifting capacity	13000 Kg /13 tons
Rated lifting capacity	320 KN. m
Lifting Capacity	13000 kg / 2.5 m
	6000 kg / 5 m
	2000 kg / 10 m
	700 kg / 16.6 m
Max. Working Radius	16.6 m
Max. Lifting Height	18.5 m
Oil tank capacity	200 L
Rated Pressure	180 kg/cm <sup>2</sup>
Boom Type / Section	Hexagonal / 5 Stages
Swing speed	0-2.5 rotation/min
Hook hoisting speed	11 m / min
Elevating angle speed	1-78°/18 sec
Boom Extending Speed	12m / 34 sec
Swing Angel	360° Continuous
Winch type	Motor winch
Swing type	Motor winch
Long of basic boom	4.6m
Long of all boom	16.6m
Out rigger span(Horizontal)	5.65m/4.45m
Crane weight	5800kg
Maximum boom angle	78°
Chassis payload	Over 13 tons

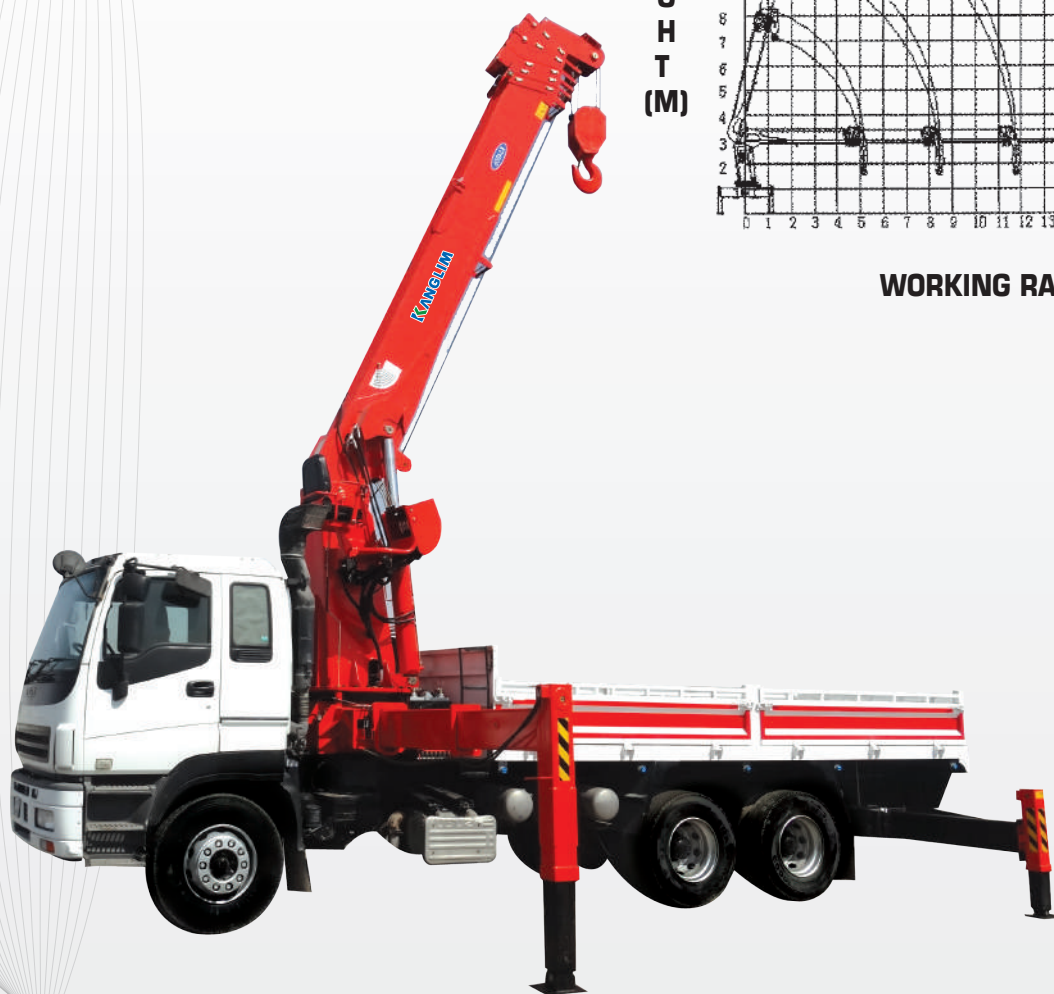
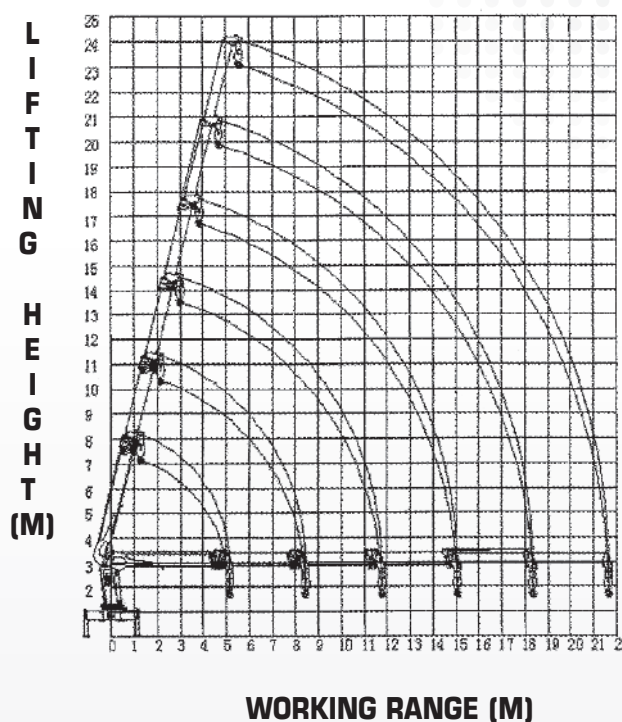
Radius in Meters	BOOM LENGTH IN METERS				
2.5	13000				
3	11000	9300			
3.5	9500	8000			
4	8300	7400	6000		
4.5	7000(4.6)	6800	5500	5000	4000
5		6000	5000	4500	3600
6		5200	4700	4000	3400
7		4200	3900	3700	3200
8		3500(7.6)	3300	3200	2900
9			2800	2600	2000
10			2000(10.6)	2000	1500
12				1600	1100
14				1100(13.6)	900
16					700(16.6)
17					





## LIFTING PERFORMANCE TABLE

### WORKING RANGE & LIFTING HEIGHT (M)



HIGH WORKING SPEED, CONVENIENT CONTROL

## KS3206 STICK-BOOM CRANE

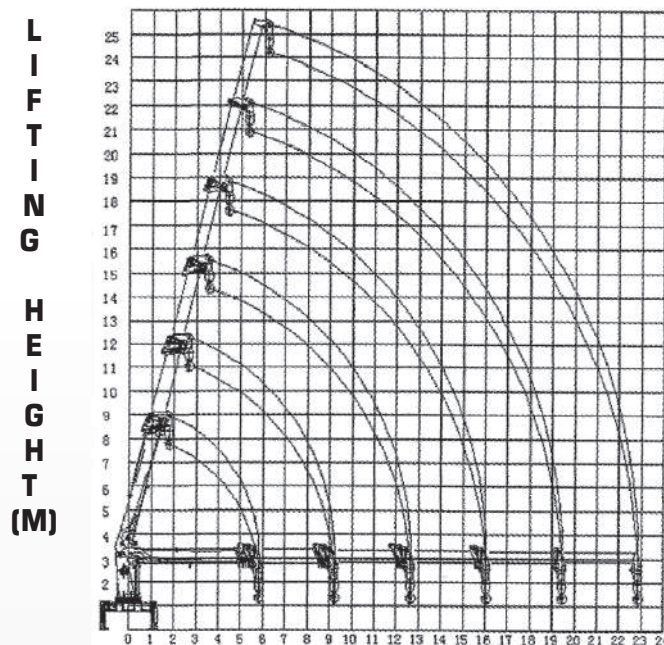
KS3206	
Maximum lifting capacity	14000 Kg / 14 tons
Rated lifting capacity	343 KN. m
Lifting Capacity	14000 kg / 2.5 m
	6000 kg / 5 m
	1200 kg / 12 m
	200 kg / 21.6 m
Max. Working Radius	21.6 m
Max. Lifting Height	23 m
Oil tank capacity	200 L
Rated Pressure	180 kg/cm <sup>2</sup>
Boom Type / Section	Hexagonal / 6 Stages
Swing speed	0-3 rotation/min
Hook hoisting speed	12 m / min
Elevating angle speed	-10-75°/12 sec
Boom Extending Speed	16.5m / 30 sec
Swing Angel	360° Continuous
Winch type	Motor winch
Swing type	Ring gear
Long of basic boom	5.14m
Long of all boom	21.6m
Out rigger span(Horizontal)	6.2m/4.45m
Crane weight	6200 kg
Maximum boom angle	75°
Chassis payload	Over 13 tons

Radius in Meters	BOOM LENGTH IN METERS					
2.5	14000					
2.6	13000					
3	11000	9000				
3.5	9000	8000	7000			
4	8300	7000	6500	5500		
4.5	7000	6000	5900	5000		
5	6000(5.1)	5500	5300	4500	3700	
6		4500	4300	4000	3400	
7		3900	3500	3200	3000	2700
8		2700	2600	2500	2300	2100
9		2500(8.4)	2300	1800	1600	1500
10			1900	1400	1300	1200
12			1200(11.7)	1100	1100	1000
14				900	900	900
16				800(15.0)	800	800
18					500(18.3)	500
20						300
22						200(21.6)



## LIFTING PERFORMANCE TABLE

### WORKING RANGE & LIFTING HEIGHT (M)



### WORKING RANGE (M)



**HIGH HARDNESS STEEL, COMPACT STRUCTURAL AND  
SMALL INSTALL SPACE**



## KS4806 STICK-BOOM CRANE

KS4806	
Maximum lifting capacity	16000 Kg/16 tons
Rated lifting capacity	480 KN. m
Lifting Capacity	16000kg / 3 m
	10000 kg / 6 m
	1850 kg / 15 m
	700 kg / 22.8 m
Max. Working Radius	22.8 m
Max. Lifting Height	24.2 m
Oil tank capacity	300 L
Rated Pressure	180 kg/cm <sup>2</sup>
Boom Type / Section	Hexagonal / 6 Stages
Swing speed	0-3.0 rotation/min
Hook hoisting speed	Motor Winch
Elevating angle speed	Ring Gear
Boom Extending Speed	14 m / min
Swing Angel	-10°-75°/30 sec
Winch type	17m / 55 sec
Swing type	360° Continuous
Long of basic boom	5.8m
Long of all boom	22.8m
Out rigger span(Horizontal)	7m/5.2m
Crane weight	8500kg
Maximum boom angle	75°
Chassis payload	Over 20 tons

Radius IN METER	BOOM LENGTH IN METERS					
3	16000	10200				
4	13000	8500	7000			
5	11000	7800	5900	5200		
6	10000	7200	5400	1600	4000	
7		6700	5000	4200	3500	3000
8		5500	4700	3900	3350	2600
9		5200	3900	3700	3250	2400
10		4400	3400	3400	2930	2200
11			3150	3150	2800	2050
12			1550	2550	2550	1980
13			2200	2200	2200	1800
14				2000	2000	1750
15				1850	1820	1600
16				1650	1620	1380
17					1400	1180
18					1200	1030
19					1050	970
20						850
21						800
22						700

## ELEVATOR TRUCK



## ELECTRICAL WORK VEHICLES



**MAIN PARTS BEEN TWO-YEAR WARRANTY,  
NO LONGER WORRIES**

## SPECIAL TRUCK SERIES



## KDC 5500 AUGER CRANE







ص.ب ١٥٣٩ - الدمام ٣١٤٤١ - المملكة العربية السعودية

P.O. Box: 1539 - Dammam - 31441 - Kingdom of Saudi Arabia

+966 13 8388888 - 8378888

+ 966 13 8378383

askar@askar.com.sa

www.askar.com.sa



Exclusive agent in GCC





ص.ب ١٥٣٩ - الدمام ٣١٤٤١ - المملكة العربية السعودية

P.O. Box: 1539 - Dammam - 31441 - Kingdom of Saudi Arabia

+966 13 8388888 - 8378888

+ 966 13 8378383

askar@askar.com.sa

www.askar.com.sa



Exclusive agent in GCC

